



LSI's Healthcare Collection; Protective floors™, is specifically designed to address the needs of healthcare facilities. Built right into the top two layers of every tile and plank are micron-size silver particles. This natural element inherently reacts to bacteria to safely and effectively inhibit the growth of a wide range of single-cell micro-organisms with up to 99.9% effectiveness. These tiles also inhibit the growth of both mold and mildew adding another line of defense to infection control.

## Enhanced Infection Control

the benefits of Silver as a germ inhibitor



**Protective floors™**  
800.449.3916  
[lsihealthcare.com](http://lsihealthcare.com)

# Protective floors™

## Anti-bacterial Test (AATCC 147)

Testing the effectiveness of inhibiting growth of Staphylococcus aureus, bacteria found on the human skin.



image 1

Petri dish coated with agar, nutrients that will support bacterial and fungal growth



image 2

Petri dish is prepared by streaking five lines of liquid solution containing live bacteria across the surface of the agar



image 3

A small piece of Protective floors™ is placed over the live bacteria. The petri dish is placed in an incubator for 24 hours. Agar provides nourishment for the bacteria

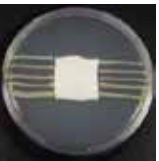


image 4

After 24 hours the sample of Protective floors™ shows no signs of bacterial growth

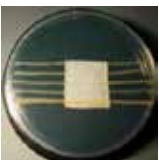


image 5

For comparison, this plate indicates significant bacterial growth that can be seen as thick, yellow lines

## Anti-fungal Test (AATCC Method 30)

Testing the effectiveness of inhibiting growth of Aspergillus niger, fungus causing mildew commonly found in the environment.

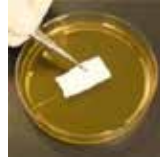


image 1

In a petri dish, a small sample of Protective floors™ is placed on the surface of agar

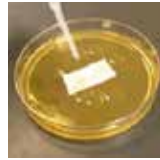


image 2

A solution containing spores of Aspergillus niger is dropped onto the petri dish and sample. The test is placed in an incubator for 7 days.



image 3

There is no fungi growing on or near the Protective floors™ sample



image 4

An sample untreated with silver has nothing to slow down the growth of the fungi allowing it to engulf the sample

**Test results indicate Protective floors™ inhibits the growth of bacteria and fungi with 99.9% effectiveness**