

Product Overview

The AA 2010 is a water-based acrylic aerosol adhesive used for the permanent installation of rubber and vinyl wall products. The AA 2010 does not contain any Ozone depleting propellents, Red List 3.0 Chemicals, EPA Chemicals of Concern and other hazardous chemicals, yet is still extremely aggressive.

The AA 2010 is an easy to use and install alternative to contact or trowel-on adhesives for wall applications. Te AA 2010 can be applied either directly to the material or directly to the wall, easing installation. It's extremely long working time allows for installation adjustments, which is especially useful when installing

large format or heavy materials.

Due to it's easy spray application and long working time, the AA 2010 is an easy to use product that allows for flexibility during installation.

Features

- Excellent Vertical Grab
- Easy Application
- Extremely Long Working Time
- Releasable For Repositioning
- Easy Clean-Up
- Adheres to Non-Porous Substrates
- No EPA Chemicals of Concern
- No Red List 3.0 Chemicals
- Qualifies for LEED® Credits
- CA Section 01350 Complaint

Technical Data

Unit Size: **22 oz.**

Unit Weight: **2 lbs.**

EPA 8260B - VOC Content: **0.0 g/ml**

NFPA Flammability Rating: **0 (non-flammable)**

Unit Coverage Rate: **70 sq. ft.**

Flash Time: **10 - 20 Minutes**

Working Time: **4 Hours**

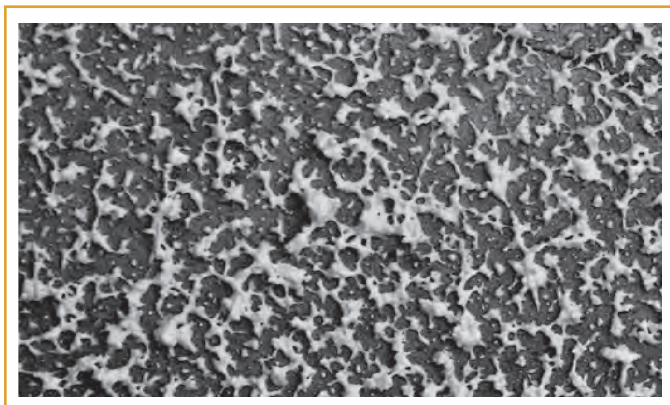
Tackable Use: **Immediate**

Maintenance: **12 Hours**

Shelf Life: **3 Years**

Storage Temperature: **65° - 85° F**

Required Spray Pattern



Product Limitations

All timing and coverage rates are subject to substrate conditions, such as porosity and flatness, and ambient conditions, such as ambient air temperature, relative humidity and substrate temperature. Actual timing and coverage rates may vary. Do not allow product to freeze. Do not install adhesive over wet substrates, hydrostatic pressure or substrates that contain contaminants. Do not install outdoors. Adhesive cannot resist extreme dimensional instability of materials, which may cause gapping, cupping, buckling and/or edge lifting. Do not install over existing existing adhesives or adhesive residues. Do not use to install cork tile.

1. PRE-INSTALLATION

- ❑ Consult all associated technical data for all related products and procedures, including all material documents, prior to installation.
- ❑ Allow all trades to complete work prior to installation.
- ❑ Deliver all materials to the installation location in their original packaging with labels intact.
- ❑ Do not stack pallets to avoid damage.
- ❑ Remove all plastic and strapping from product after delivery and inspect for visible or obvious leakage or damage.
- ❑ Ensure that adhesive is approved for use with material.
- ❑ Ensure installation area and material storage conditions are between 65° F (19° C) and 85° F (30° C) for at least 48 hours before, during and after installation.
- ❑ Ensure HVAC system is operational and fully functioning at normal operating conditions.
- ❑ Protect installation area from extreme climate changes, such as heat, freezing, humidity, and direct sunlight, for at least 48 hours prior, during and 48 hours after installation.
- ❑ Ensure all substrate preparation requirements have been performed, read and/or understood by all interested parties.
- ❑ Ensure all vents, walls, moldings and/or doorways are protected with tape or plastic prior to installation.
- ❑ Do not proceed with installation until all conditions have been met.

2. SUBSTRATE PREPARATION

Adhesive is suitable for installation over fully cured drywall, plaster and masonry, as well as FRP, DensShield, metal, ceramic tile and approved plywood paneling or exterior grade plywood (Group 1, CC type). All substrates must be clean, smooth, permanently dry, flat, and structurally sound. Substrates must be free of visible water or condensation, dust, residual adhesives and adhesive removers, solvents, wax, oil, grease, asphalt, gypsum compounds, visible alkaline salts or excessive efflorescence, mold, mildew and any other loose foreign matter. Any cracks, voids, divots, grout lines and imperfections must be filled with a filler or compound that is suitable for the substrate.

When installing directly over resinous products, such as an epoxy paint, ensure that coating is dry to the touch and has cured for the prescribed length of time. Substrate must be clean, dry, sound and free of contaminants.

Metal substrates must be thoroughly sanded/ground and cleaned of any residue, oil, rust and/or oxidation. Substrate must be smooth, flat and sound prior to installation. When installing in areas that may be subject to topical water or moisture and/or high humidity, an anti-corrosive coating should be applied to protect the metal. Contact a local paint or coating supplier for coating recommendations.

Clean all substrates with a damp rag to remove any dust, dirt and debris. To ensure the substrate is free of dust, wipe hand across surface. If there is any dust transfer to the hand, the substrate will need additional cleaning. Joint compounds should be primed with a latex-based primer to prevent dusting.

3. PRODUCT APPLICATION

Ensure substrate is clean, dry, flat, sound and suitably prepared prior to installation, as manufacturer is not responsible for substrates that have not been properly prepared. Ensure adhesive is approved for use with material, as manufacturer is not responsible for all adhesion issues related to improper adhesive selection or usage.

Adhesive may be installed directly to the wall surface or directly to the wall material. If installing on material, be sure to tape down a protective material, such as craft paper or plastic, on a flat horizontal area to prevent adhesive over-spray. If installing on wall, be sure to tape off and/or protect areas of the wall that will not be covered by wall material to prevent over-spray. Adhesive is difficult to remove when dry - ensure any adhesive over-spray is cleaned from all surfaces immediately.

While sealed, shake container vigorously. Remove safety tab and, with unit pointed directly at wall or material from a distance of 18-24 inches, pull adhesive trigger and apply to material or wall, moving can back and forth. Adhesive should come out as a wide mist and fall like snow. Do not use a serpentine motion, as this may create uneven coverage.

Be sure full and even coverage is achieved via the spray pattern on the unit or on Page 1. Avoid excessive adhesive build-up, as this may telegraph through material.

Clean accidental over-spray immediately and while wet per section 5. Allow adhesive to flash completely – adhesive should not transfer to fingertips when lightly touched (10 - 20 minutes). Flash times may vary depending on substrate porosity, coverage rate and ambient conditions. Install material within 4 hours of application to ensure proper adhesion. Prevent dust, dirt and debris from contaminating adhesive.

Material may be repositioned as necessary to ensure correct placement and tight seams. Do not roll or apply extreme pressure while repositioning until proper placement is confirmed, as repositioning after full contact is made may be extremely difficult or damage the wall.

Immediately after installation, roll material with a laminate/wall roller, crossing in a perpendicular or diagonal direction after initial roll. Pay close attention to seams and edges. Visually inspect installation to ensure that material has not shifted and that adhesive has not been compressed onto surface.

4. PRODUCT CLEAN-UP

Wet adhesive and over-spray can be cleaned with a clean towel or cloth and a solution of a pH neutral cleaner and clean, potable water. Adhesive that has dried onto vertical surfaces may be difficult to remove, as well as cause damage to paint or wall materials after removal. Walls, tools and materials where adhesive has dried can be cleaned with denatured alcohol or equivalent solvent adhesive cleaner.

5. WARRANTY

Gold Series provides a Limited 1 year material & labor warranty for all properly installed adhesive products. For additional information, see associated warranty documents.