

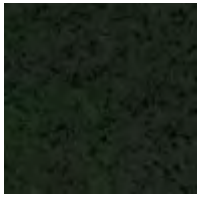
Suitable for a variety of fitness & recreational areas, USA made Re-Tire is made with post-consumer SBR tire waste and EPDM rubber.





# Capri Fitness & Rec

## Strength



After Dark



Cloudy



Cream



Lemonade



Trophy



Cardinal



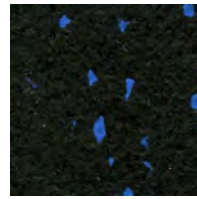
Fire



Grass



Galaxy



Blue Night



Violet

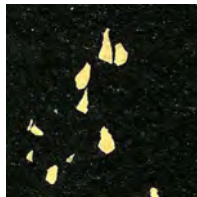


Alley

## Endurance



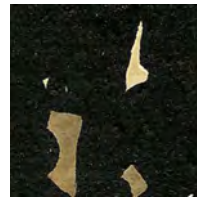
Black Tie



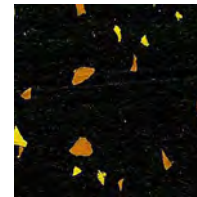
Nightlight



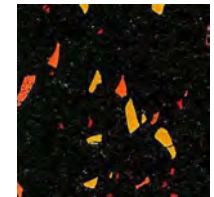
Starry Night



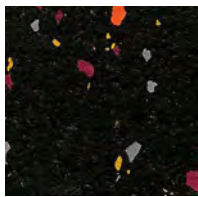
Moon Rocks



Sunsports



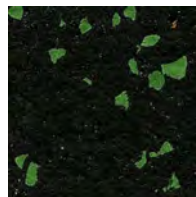
Hot Coals



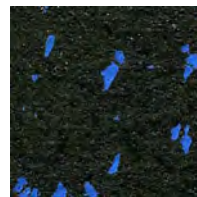
After Glow



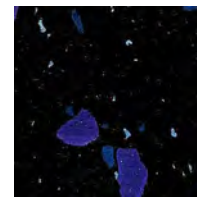
Fireglow



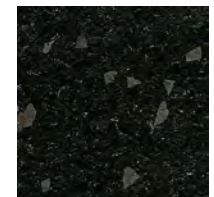
Black Forest



Blue Moon

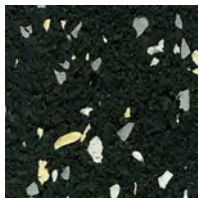


Twilight Zone

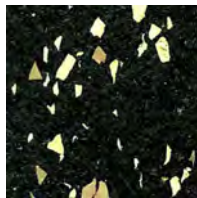


Black Earth

## Stamina



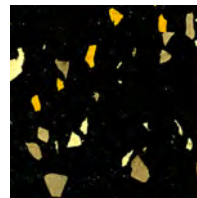
Zeal



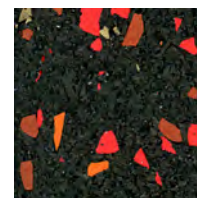
Action



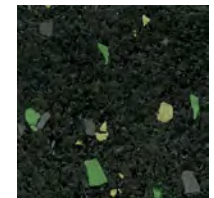
Force



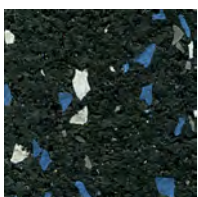
Power



Zest



More Energy



Motion

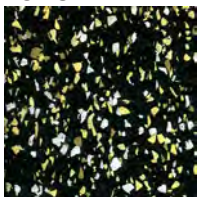


Bounce

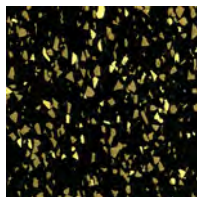


Vigor

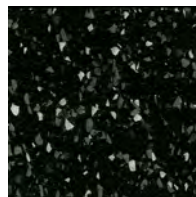
## Tone



Spirit



Zing



Vim

### Thicknesses & Formats

4' wide Rolls: 3.2, 4, 6, 8 12 mm  
 24" x 24" Square Edge Tile: 3.2, 4, 6, 8 mm  
 24" x 24" Interlocking Tile: 8 mm

In fitness areas with free weights 8 mm thickness is required. For stationary equipment, including spinning bikes, use 6 or 8 mm.

With recycled content, shade variations are possible. Skive/marks from the manufacturing process are inherent.