

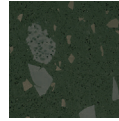
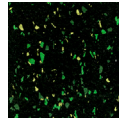
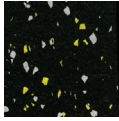
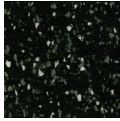
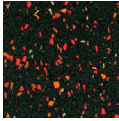
Capri
collections

Capri Fitness & Rec



Maple Plaza • Gensler LA

Capri Fitness & Rec: re-tire recycled rubber



Suitable for a variety of fitness and recreational areas, USA Made Re-Tire is made with post-consumer SBR tire waste and EPDM rubber.

Rolls: 4' wide • Tiles: 36" x 36", 24" x 24" & 12" x 24" • Interlocking tiles (8 mm or greater): 36" x 36", 24" x 24"
Thicknesses: 3, 2, 4, 6, 8, 9 mm

All Fitness & Rec colors are also available in 12 mm thickness in roll good format

In fitness areas with free weights 8 mm or greater thickness is required

Stationary equipment including spinning bikes: 6 mm or greater

Areas where spikes or cleats are worn: 9 mm or greater required with no finish applied



With recycled content, variations are possible.

Skive/knife marks are inherent in the manufacturing process.

Site applied finish coats on Fitness & Rec are optional.

