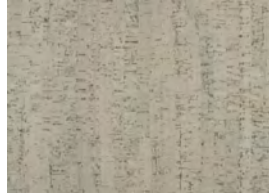


# Eco-Clicks Cork

## floating floor



Channel White



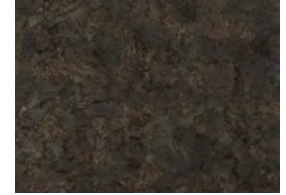
Gray Wash



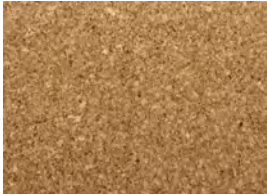
Billows Ore



Billows Ash



Billows Current



Plateau



Rugged



Tumbled



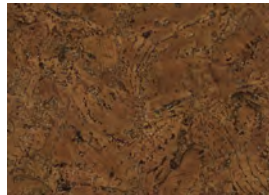
Blocks



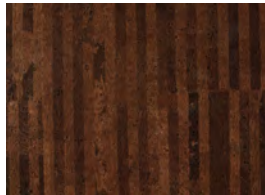
Cable



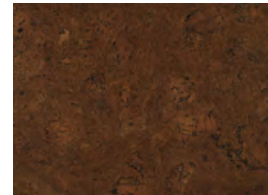
Channel



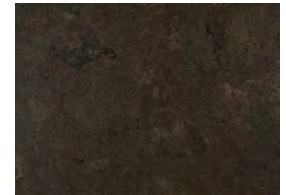
Billows Brown



Broken Lines



Chestnut



Sable

Made from the bark of the cork oak tree, cork is natural, durable, quiet and comfortable. Eco-Clicks cork is constructed on the glue less Uniclic system. Made in layers, Eco-Clicks cork top layer is 3 mm pre-finished cork; the middle layer is 6 mm moisture resistant HDF board with an edge sealing system and the bottom layer is 1.5 mm cork underlayment with antibacterial protection.

Standard plank size is 12" x 36" (nominal) x 10.5 mm. All Eco-Clicks cork colors/patterns can be made in glue down tiles. Please inquire. All patterns are random and not intended to match or line up. Like all natural wood, cork has shade variations; attention to blending shades when installing is necessary. UV rays will fade natural wood including cork.

Floating floors are suitable for use in many commercial areas and can be installed on, below or above grade over a variety of substrates. As the name implies, floating floors "float" as a unit with expansion spaces necessary. Floating floors do not require adhesive which allows for immediate usage after installation. Capri offers coordinating accessories to be used with Eco-Clicks cork.



Declare.

