

# AVA<sup>®</sup>RYME<sup>™</sup>



Béton Iron



Tuscany Oak Peanut



Alpine Oak Syrup

**Peninsula**  
(9" x 48" / 228 mm x 1219 mm)

*Straight Edge*



Peninsula Oak Canyon  
PO2D002L / RYME+: PO2D002AL



Peninsula Oak Summit  
PO2D001L / RYME+: PO2D001AL



Peninsula Oak Panhandle  
PO2D006L / RYME+: PO2D006AL



Peninsula Oak Timber  
PO2D005L / RYME+: PO2D005AL

**Alpine**  
(9" x 48" / 228 mm x 1219 mm)

*Microbevel Edge /  
Embossed in Register*



Alpine Oak Anchor  
AO2D009L / RYME+: AO2D009AL



Alpine Oak Prestige  
AO2D008L / RYME+: AO2D008AL



Alpine Oak Khaki  
AO2D005L / RYME+: AO2D005AL



Alpine Oak Syrup  
AO2D007L / RYME+: AO2D007AL

**Tuscany**  
(9" x 48" / 228 mm x 1219 mm)

*Microbevel Edge /  
Embossed in Register*



Tuscany Oak Peanut  
TO2D008L / RYME+: TO2D008AL



Tuscany Oak Snow  
TO2D001L / RYME+: TO2D001AL



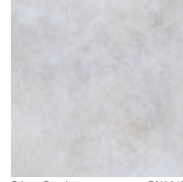
Tuscany Oak Mist  
TO2D002L / RYME+: TO2D002AL



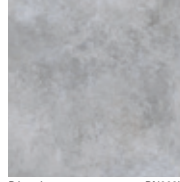
Tuscany Oak Carafe  
TO2D007L / RYME+: TO2D007AL

**Béton**  
(39.37" x 39.37" / 1000 mm x 1000 mm)

*Straight Edge*



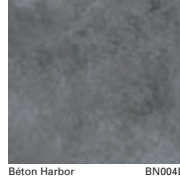
Béton Pearl BN001L



Béton Iron BN002L



Béton Steel BN003L



Béton Harbor BN004L

# AVA RYME

## RYME Specifications

- Loose Lay
- Wear Layer: 22 mil (0.55 mm)
- Overall Thickness: 5.0 mm
- Size, Peninsula / Alpine / Tuscany: 9" x 48" (228 mm x 1219 mm)
- Size, Béton: 39.37" x 39.37" (1000 mm x 1000 mm)
- 100% Phthalate Free
- Reach Compliant
- Warranty: 20-Year Commercial & Lifetime Residential

## RYME+ Specifications

- Same as RYME, but with the following:
- Overall Thickness: 5.5 mm
  - IXPE Acoustical Backing (Sound Rating: STC 53, IIC 55 and Δ IIC 20 – with 6" slab concrete assembly with no ceiling)
  - Warranty: 15-Year Light Commercial & Lifetime Residential



- Patented Coating
- 30% More Scratch Resistance Over Typical Coatings
- Exceptional Wear Resistance and High Strength

# AVA

[avaflor.com](http://avaflor.com)

877.861.5292  
sales@avaflor.com

