

AVA[®] RSRV





Kyoto 9.25" x 71.45"



Washed 6.6" x 59.75"



Komma 6.6" x 59.75"



Béton 18" x 36" (nominal)



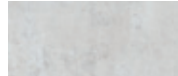
Kyoto Loft RKY001S-605



Washed Loft RWA001S-605



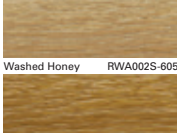
Komma Loft RKO001S-605



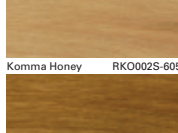
Béton Pearl RBE001S-605



Kyoto Honey RKY002S-605



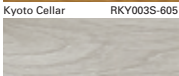
Washed Honey RWA002S-605



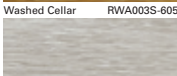
Komma Honey RKO002S-605



Béton Iron RBE002S-605



Kyoto Cellar RKY003S-605



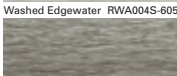
Washed Cellar RWA003S-605



Komma Cellar RKO003S-605



Kyoto Edgewater RKY004S-605



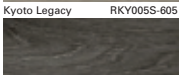
Washed Edgewater RWA004S-605



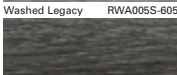
Komma Edgewater RKO004S-605



Béton Steel RBE003S-605



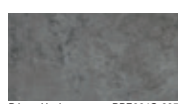
Kyoto Legacy RKY005S-605



Washed Legacy RWA005S-605



Komma Legacy RKO005S-605



Béton Harbor RBE004S-605

Kyoto Wharf RKY006S-605

Washed Wharf RWA006S-605

Komma Wharf RKO006S-605



AVA[®] RSRV[®]

Specifications

- Wear Layer: 22 mil (0.55 mm)
- Overall Thickness: 6.0 mm
- IXPE acoustical backing
- 100% Phthalate Free
- Reach Compliant
- Assure Certified
- Warranty: 10-Year Heavy Commercial & Lifetime Residential



- Patented Coating
- 30% More Scratch Resistance Over Typical Coatings
- Exceptional Wear Resistance and High Strength

AVA[®]

avaflor.com

877.861.5292
sales@avaflor.com